



Public Toilets

for cities and public spaces



Public toilets



**Individual
solutions**



**Refurbish-
ment &
construction
in existing
buildings**



**Service &
operation**

HERING Sanikonzept – Everything From A Single Source

Over 45 years of industry expertise, with more than 6000 toilet systems installed, and currently 1300* in operation, HERING concept is a industry leader.

As a system supplier in the sanitary sector, we develop individual toilet

solutions and provide everything from a single source, from planning and construction through maintenance and cleaning to financing. Our tailored toilet facilities guarantee hygiene in public spaces and are customised to individual

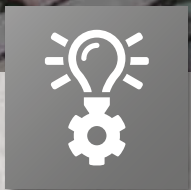
requirements. Along with our City WC systems, our repertoire also includes kiosks toilets, staff toilets and urinals as well as lots of other solutions.



HERING as a company group

We offer a very wide portfolio of products. Our employees are specialists in system solutions who can develop individual solutions tailored to your needs. Numerous "made by HERING" modular toilet systems are currently used in public spaces.







Public Toilets

Our City WCs are the smart solution for downtowns, parks, cemeteries and much more. They meet the strictest requirements in terms of sustainability, hygiene and efficiency. They have a very positive impact on the town image and on

customer satisfaction.

All toilet systems are available in a range from basic models to fully automated high-tech solutions.

We adapt our toilets to the specific requirements of our customers, both inside and out. The solid con-

crete structure and robust fittings guarantee our products a long service life.



- Turnkey construction
- Longevity based on robust concrete construction
- Vandalism-resistant design
- Automatic cleaning modules (optional)
- Modern payment systems (including cashless)
- Disabled access toilets per DIN 18040
- Eco-friendly with water-saving technology
- Individual design and fitting options
- Optimised hygiene



Floor Plans

Our toilet systems are available in a wide range of sizes and configurations. Whether they are rectangular, octagonal or oval, you decide on the size and number of cubicles you want.

The following types of rooms are available:

- Ladies' toilet
- Men's toilet
- Urinals
- Unisex handicapped access cubicle in accordance with DIN 18040

Below are different examples of our standard toilet system options with different numbers of user rooms and equipment.



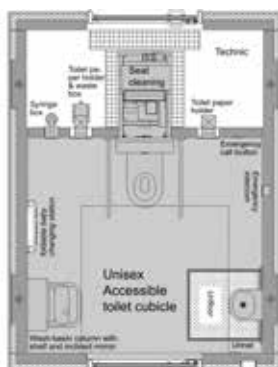
Single room system: unisex handicapped access toilet



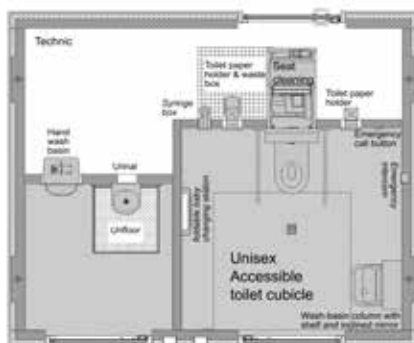
Two-room system: unisex handicapped access toilet and urinal room



Two-room system: handicapped access toilet / ladies' toilet and men's toilet



L x W x H 2.78 x 3.67 x 2.62 m + foundation



L x W x H 4.49 x 3.67 x 2.62 m + foundation



L x W x H 6.30 x 2.94 x 2.62 m + foundation

Each toilet facility has a separate technical room and offers an excellent level of protection against vandalism. All components are screwed in from the rear, eliminating the risk of damage or theft.

Did you know ...

... that you can configure the shape, number of rooms and room types to fit any location or budget?



Three-room system: disabled access unisex toilet, urinal room and unisex toilet



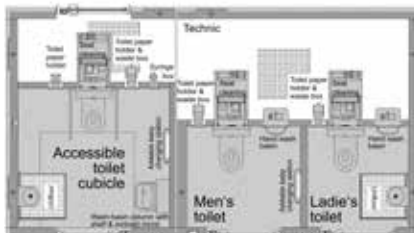
Three-room system: disabled access unisex toilet, ladies' toilet and men's toilet



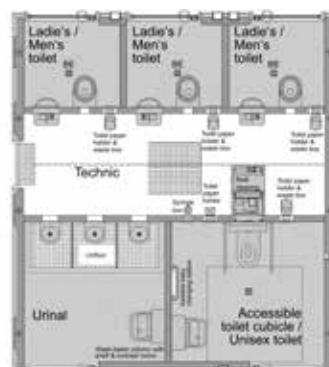
Five-room system: disabled access unisex toilet/urinal room and 3x unisex toilet



L x W x H 6.57 x 3.67 x 2.62 m + foundation



L x W x H 6.57 x 3.67 x 2.62 m + foundation



L x W x H 5.10 x 5.68 x 2.62 m + foundation



Floor Plans & Modules

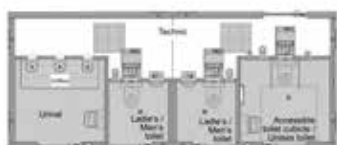
Would you like to extend your existing toilet system? Do you want more flexibility?

It is possible with our modular system of one, two or three room blocks.

Below are two example floor plans showing how you can easily convert a four-room system to a five or six-room system.

Did you know ...

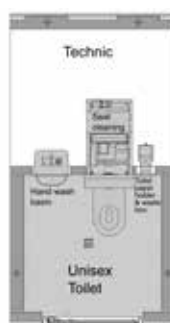
... how simple it is to extend your toilet system using our modules?



Four-room system

$L \times W \times H$ 8.82 x 3.67 x 2.62 m + foundation

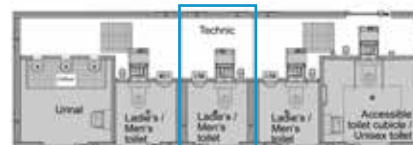
+



Single-room module

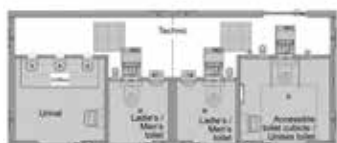
$L \times W \times H$ 1.92 x 3.67 x 2.62 m + foundation

=



Four-room system + Single-room module

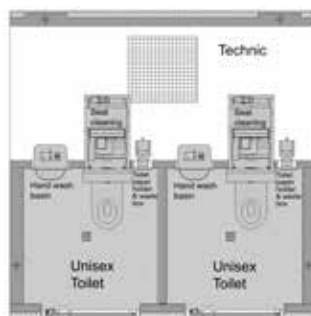
$L \times W \times H$ 10.76 x 3.67 x 2.62 m + foundation



Four-room system

$L \times W \times H$ 8.82 x 3.67 x 2.62 m + foundation

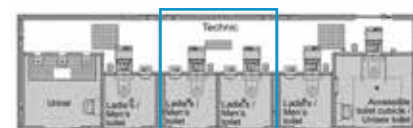
+



Two-room module

$L \times W \times H$ 3.63 x 3.67 x 2.62 m + foundation

=



Four-room system + Two-room module

$L \times W \times H$ 12.47 x 3.67 x 2.62 m + foundation



Façades & Roofs

Our wide range of façade-related products covers all possible concepts.

HPL (High Pressure Laminate), glass, wood, rough-hewn stone, steel ceramic, concrete or render – these are just a few of the façade

options which are available. Various colors are available, depending on the façade type.

A motif of your choice can also decorate your HERING facility.

We offer flat and pitched roofs with many different designs and roof coverings, including with or without porch.



Printed concrete façade, flat roof



Printed glass façade, flat roof



Wood façade, extended flat roof



Rendered façade, tiled hip roof



Clinker façade, grating roof



HPL façade, extended flat roof



Interior Design

Whether it is simple, functional or exclusive – we leave nothing to be desired when it comes to interior design.

Internal walls

Your own customised design can be on glass for the interior walls, or you can choose between single-colour glass, tiles, stainless steel or other materials, and combinations thereof.



Glass inserts



Wall tiles (50 x 25 cm)



Printed aluminium dibond, your motif



Combination of wall tiles & glass inserts

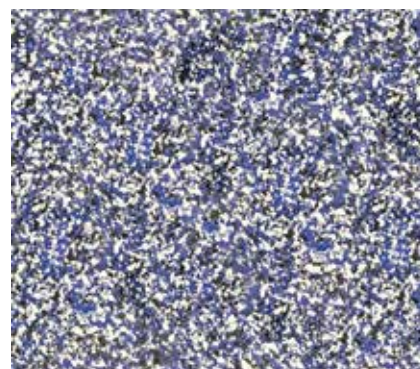
Floor covering

Our artificial resin floors prevent urine penetration and thus reduce unpleasant smells.

Alternatives: Include tiles or our water-automatic drainage floors combined with floor cleaning.



Grey artificial resin floor



Artificial resin floor, blue and other colours



Cleaning Modules

Seat cleaning

After each use and if the user leaves the toilet, the toilet seat will be cleaned, disinfected and dried automatically in a cleaning chamber in the technical room.



Floor cleaning

The water-permeable drainage floor ensures that the user has a clean, dry floor *immediately* after the high-pressure floor cleaning system is used.

(Only available in conjunction with seat cleaning.)



Urifloor

The Urifloor catches urine below the urinal. The built-in subfloor cleaning system prevents unpleasant smells and ensures optimum hygiene.



Efficient cleaning is critical in order to keep the toilet systems in a clean and hygienic condition. Our automatic cleaning systems can guarantee this.

Offer your customers the ultimate hygiene experience with the automated cleaning modules from HERING Sanikonzept.



Equipment

The basic equipment of the user rooms of our public toilet facilities includes a toilet bowl, toilet paper roll dispenser and a wash-basin (water, soap, air).

There are lots of other options available, e.g. urinals, baby changing stations, hand sanitizer and waste containers, air freshener sprays, music intercom systems and lots more.

There is also the benefit of using stainless steel in terms of longevity and a highly sanitary environment that goes hand in hand with this.



Hand wash basin



Toilet paper holder and waste box



Waste box



Toilet pan with seat made of mineral material



Urinal



Baby changing station

Various accessories can also be fitted outside to suit any location. A standard connection box to supply power and water can be easily added.

External lighting under the porch or an electric bike charging station can also be a welcome add-on for your clientele.

We offer various access control options, including tokens and cashless payment systems. Users can also pay cashless or using various smartphone apps.



Standard connection boxes



Stainless steel door with magnetic lock and concealed door drive



e-bike charging station



External lighting under the eaves



Combined cash and cashless payment system



Handicapped Access

One for all: Our integrated construction method takes into consideration wider spaces, reachable distances and the height and sizes of furnishings so that people with handicap can also use our toilets easily.

All HERING Sanikonzzept GmbH disabled access toilet systems comply with DIN 18040 for accessible design. This includes, for example, doors which can be unlocked from the outside in an emergency.

Coloured glass inserts behind all the fittings accent them, so they can be easily distinguished from the background. Our systems also feature signage in Braille and raised lettering to help with use.



Stainless steel door with magnetic lock and concealed door drive



Raisable handle with toilet paper holder & easy to reach flush control & emergency call button



Accessible toilet cubicle



Emergency intercom



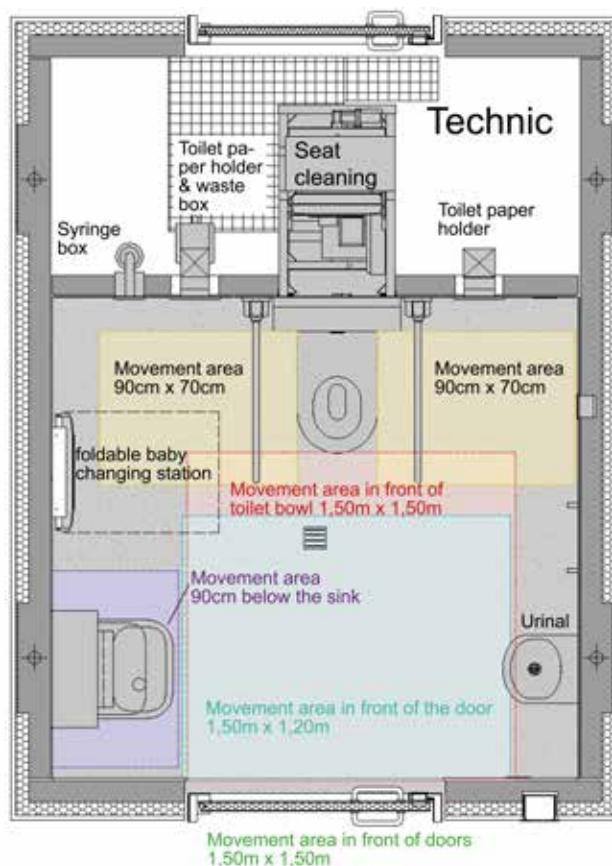
Door opener with euro key lock



Signage in Braille & raised lettering

Accessible facilities in toilet systems

- Folding grab rails beside the toilet bowl incl. toilet paper holder and buttons for flush and emergency call
- Back rest behind toilet bowl
- Accessible-height washbasin, with adjustable mirror and shelf
- 1.50 m x 1.50 m room for movement around toilet bowl and wash-basin
- Functions (water, soap, air) triggered automatically using lit buttons
- Emergency buttons, coat hooks, signage in Braille and raised lettering, automatic door
- Access by euro key



Floor plan for accessible toilet cubicle



Wash-basin column with shelf and inclined mirror



Toilets For All

Handicapped toilets can now be found in many places in Germany, but standard disabled toilets are not sufficient for people with severe or multiple disabilities.

The "Toilet for all" model is based on the design from the "Leben pur" foundation offers people and caregivers the additional equipment required to use a toilet or deal with other sanitary needs.

In addition to handicapped access toilets in accordance with DIN EN 18040, the "Toilet for all" also features the following: a height-adjustable care bed, a personal hoist, an incontinence waste container and a room size of at least 12 m², with an optional shower



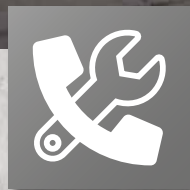
Toilets for all....

... for social inclusion for people with severe and multiple disabilities



Gallery





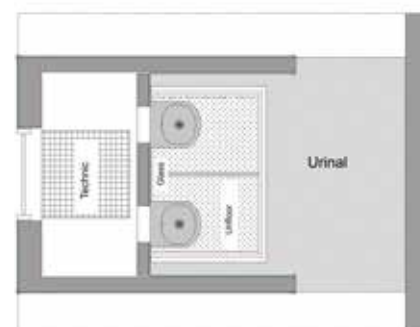
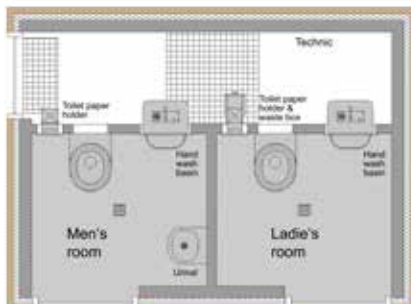
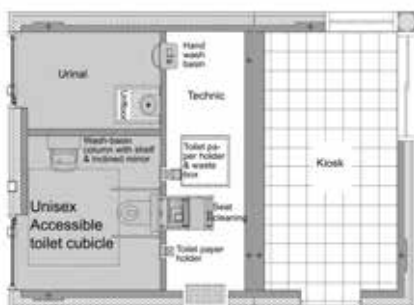


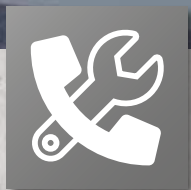
Individual Solutions

As well as our City toilets, we also offer a whole range of individual solutions. Our **kiosk toilet** provides space for the customer's requirements. It can be fitted with other rooms which can be used as kiosks, kitchenettes or staff rooms.

By contrast, our **staff toilet** is a compact, functional toilet in a public space which can be made available to employees such as bus drivers. The interior fittings are functional yet simple.

Our water-fed **urinal stand** is a real space-saver. This functional solution is perfect for locations with little space available. And there are no limits in terms of the design.







Renovation & Construction In Existing Buildings

As well as free-standing toilet systems, we can also offer the renovation and refurbishment of existing toilet systems in public buildings, shopping centres, schools, railway stations, office and council buildings among others.

We carry out comprehensive toilet renovation when and where required. We offer individual solutions which allow work to carry on as normal during the renovation measures.

We act as the general contractor and organize all aspects of renovation and construction necessary.



before



after



before



after



before



after



FlexiKit Installation Module

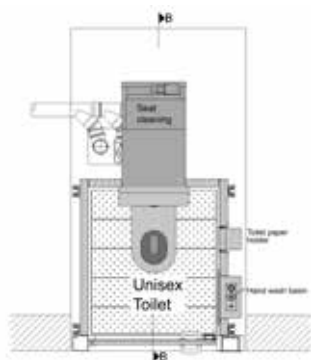
Our FlexiKit installation module is the flexible solution for quick and uncomplicated integration into existing buildings.

We produce the FlexiKit module in our factory, and it is then brought into the customer's building through a suitable opening or it can be assembled on site.

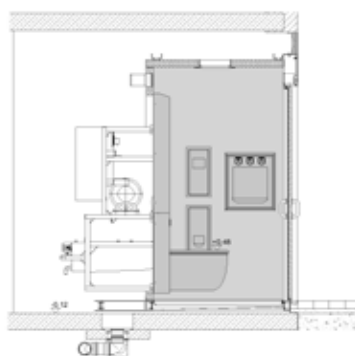
After delivery and / or assembly all that needs to be done is to connect it to the electric, water and waste-water lines.



FlexiKit Mini



L x W 1.47 x 2.70 m



*Room height: 2.67 m;
Starting at -0.12 m*

The benefits to you

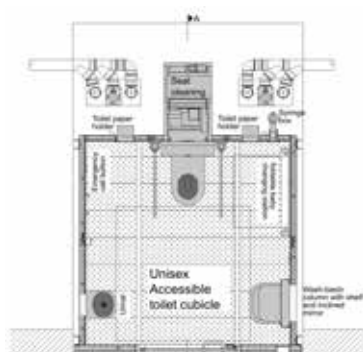
- Minimal technical planning required
- Fully pre-assembled toilet cubicle cell (alternatively, assembled on site)
- Installed and operational within one day
- Hygienic, easy-to-clean stainless steel surfaces
- Plug-in electrical installation

Variants:

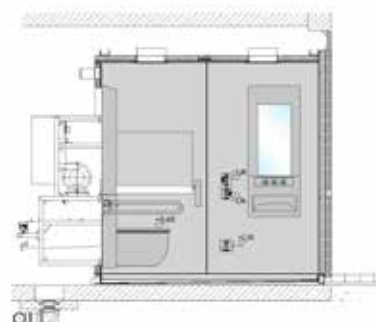
- Mini
- Handicapped
- With / without seat cleaning



FlexiKit handicapped



L x W 2.57 x 3.72 m



*Room height: 2.67 m;
Starting at -0.12 m*





Service & Operation

What comes next?

We are well-experienced in meeting operational needs.

As well as the planning and construction of public toilet facilities, HERING Sanikonzept GmbH also offers tailored service packages.

Whether it is maintenance, cleaning, repairs or finance, we are happy to put together a service package to suit your needs.



Construction & Operation

Take advantage of our complete package
– everything from a single source!



Service & Operation

■ Maintenance:

- Maintenance of entire toilet system based on manufacturer guidelines
- Extending guarantee by concluding a maintenance contract
- Execution of requisite annual electrical safety checks in accordance with DIN VDE and DGUVV3 for public buildings

■ Cleaning:

- Maintenance cleaning to your requirements
- Provision for ordering, stocking and filling of consumables
- Special cleaning, graffiti removal

■ Repairs:

- Solving all technical problems or damage
- Conversion of existing systems
- Relocation of toilet facilities

■ On-call service:

- 24/7 on-call service staffed exclusively by HERING employees

■ Technical control:

- Connection of toilet facilities to our main computer system
- Automatic system messages allow prompt response
- Data analysis and feedback

■ Financing / Full operational responsibility:

- Financing of new and renovation projects
- Full/partial investment by Hering linked to individual operation contract
- Liability for vandalism risks

We are pleased to offer various services to our many customers in Germany and also in foreign countries.





HERING Sanikonzept GmbH

Hoorwaldstraße 46
D - 57299 Burbach

T +49 (0) 2736 27-305
F +49 (0) 2736 27-236
wc@hering-sanikonzept.de