



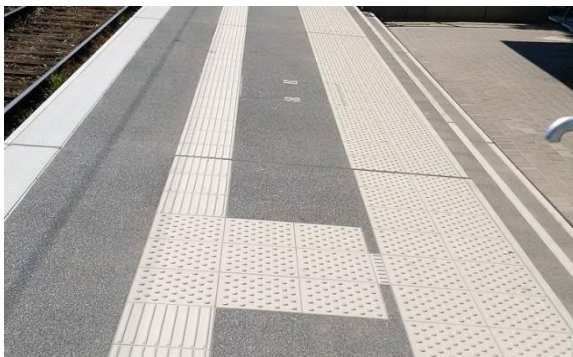
## Walleshausen train station, modula® flex

|                             |                                |
|-----------------------------|--------------------------------|
| Builder:                    | DB Station & Service, RB South |
| Year built:                 | 2013                           |
| Platform length:            | 100 m                          |
| Element dimensions (L/W/D): | 1,35 / 2,50 / 0,07 m           |
| Access level H:             | 38 cm over top of rail         |



## Erlangen train station, modula® topping

|                             |                                |
|-----------------------------|--------------------------------|
| Builder:                    | DB Station & Service, RB South |
| Year built:                 | 2014                           |
| Platform length:            | 293 m                          |
| Element dimensions (L/W/D): | 1,35 / 1,20 / 0,08 and 0,12 m  |
| Access level H:             | 76 cm over top of rail         |



## Bad Salzuflen train station, modula® flex

|                             |                               |
|-----------------------------|-------------------------------|
| Builder:                    | DB Station & Service, RB West |
| Year built:                 | 2015                          |
| Platform length:            | 150 m                         |
| Element dimensions (L/W/D): | 2,75 / 3,00 / 0,08 and 0,20 m |
| Access level H:             | 76 cm over top of rail        |



## Tapfheim train station, modula® flex

|                             |                             |
|-----------------------------|-----------------------------|
| Builder:                    | DB Bahnbau Gruppe, RB South |
| Year built:                 | 2015                        |
| Platform length:            | 140 m                       |
| Element dimensions (L/W/D): | 1,35 / 2,50 / 0,08 m        |
| Access level H:             | 0,55 cm over top of rail    |



## Stop Niederschelden, modula® flex

|                             |                                |
|-----------------------------|--------------------------------|
| Builder:                    | DB Station & Service, RB South |
| Year built:                 | 2014                           |
| Platform length:            | 2 x 120 m                      |
| Element dimensions (L/W/D): | 1,35 / 2,75 / 0,08 m           |
| Access level H:             | 0,76 cm over top of rail       |